




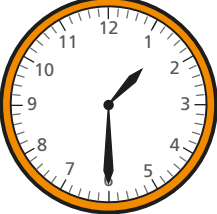
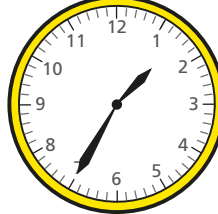
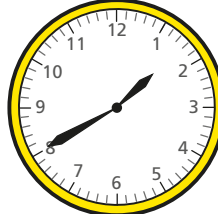
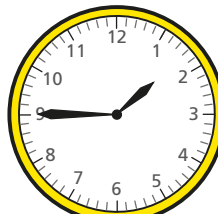


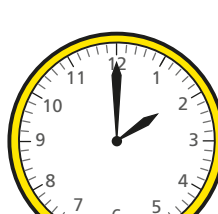


# Telling time to 5 minutes

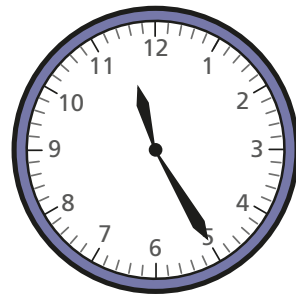
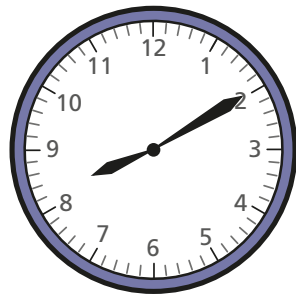
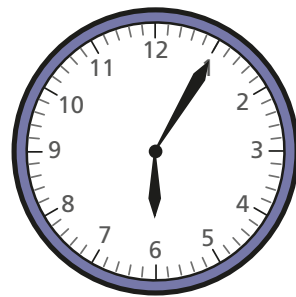
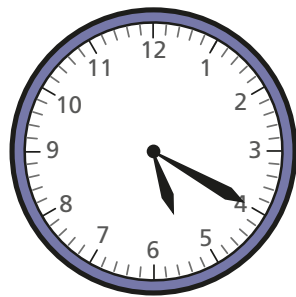
1 Complete the table.

|   |                             |
|---|-----------------------------|
|    | 5 past 1                    |
|   | <input type="text"/> past 1 |
|  |                             |
|  |                             |
|  |                             |
|  |                             |

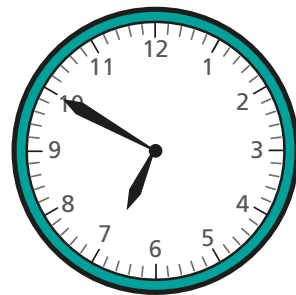
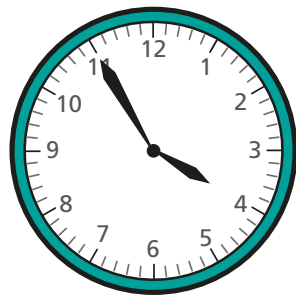
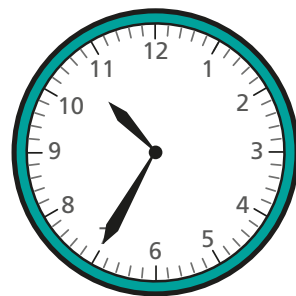
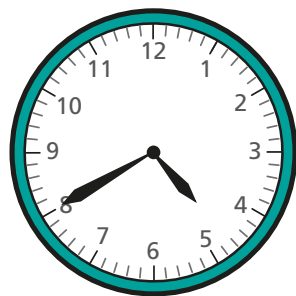
2 Complete the table.

|   |                           |
|---|---------------------------|
|    | 25 to 2                   |
|    | <input type="text"/> to 2 |
|   |                           |
|  |                           |
|  |                           |
|  |                           |

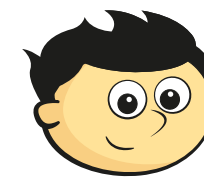
3 Write the time shown on each clock.



4 Write the time shown on each clock.

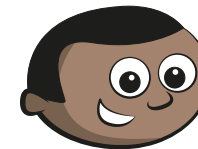
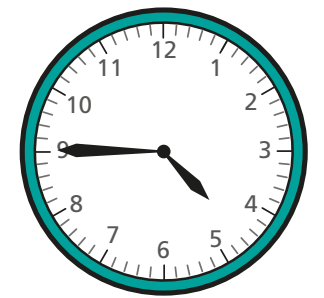


5 Jack and Mo read the time on the clock.



It is quarter to 5

Jack



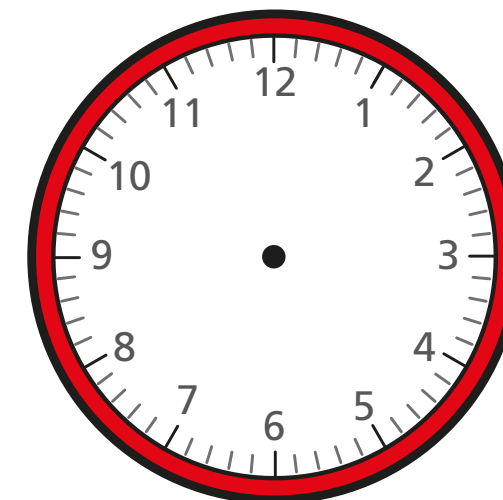
It is 15 minutes to 5

Mo

Who is correct? \_\_\_\_\_

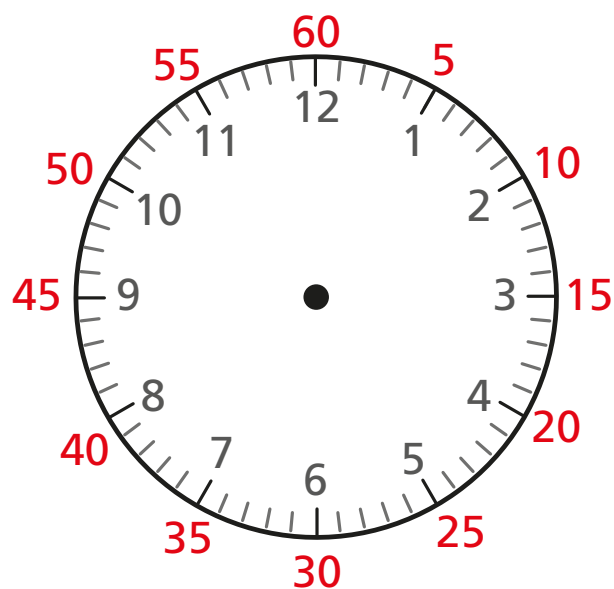
How do you know?

6 Draw on the clock to show 25 minutes past 3



# Hours and days

- 1 Complete the sentences.  
You can use the clock to help you.



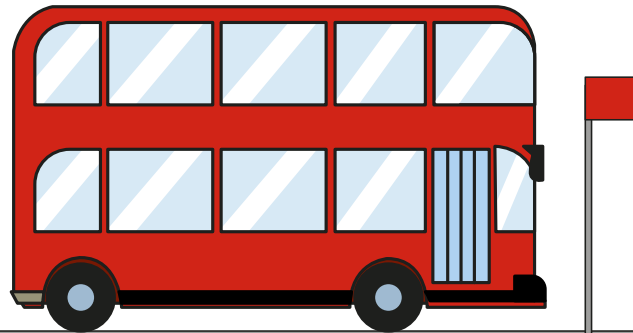
- a) There are  minutes in 1 hour.
- b) There are  minutes in half an hour.
- c) There are  minutes in quarter of an hour.
- d) There are  minutes in one and a half hours.

- 2 Complete the table.

| 60 minutes earlier | Time now | 30 minutes later |
|--------------------|----------|------------------|
| 3 o'clock          |          | half past 4      |
|                    |          |                  |
|                    |          |                  |
|                    |          |                  |
|                    |          |                  |
|                    |          |                  |

- 3 Annie and her mum take the bus to Gran's house.

The bus ride takes one hour.



- a) What time will Annie and her mum arrive if the bus leaves at 9 o'clock?

\_\_\_\_\_

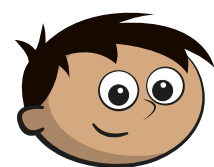
- b) Annie and her mum get the bus home.

They get off the bus at quarter to 2

What time did they get on the bus?

\_\_\_\_\_

- 4 Amir went to the cinema.

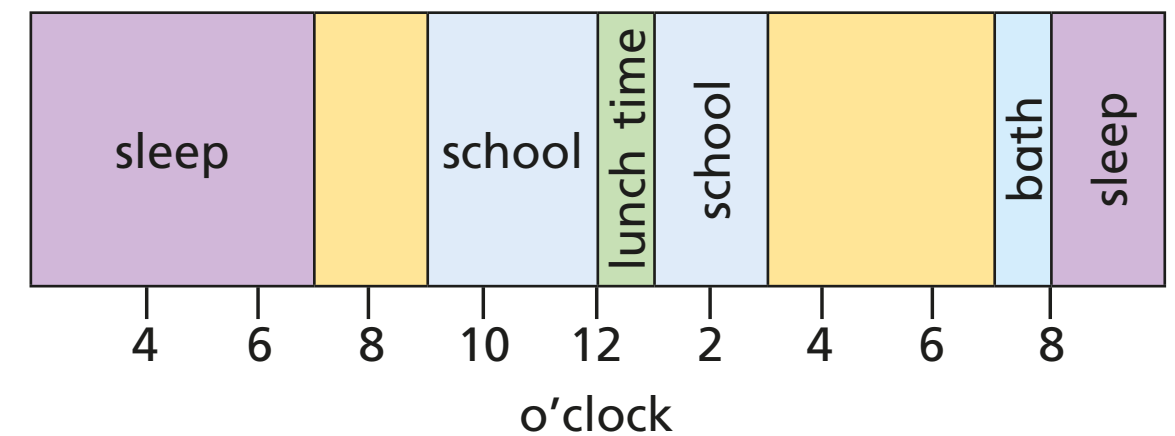


The film started at half past two and lasted for 90 minutes.

What time did the film end? \_\_\_\_\_



- 5 The bar model shows a section of Dexter's day.



- a) What time did Dexter go to bed?

\_\_\_\_\_

- b) What time did Dexter get up?

\_\_\_\_\_

- c) What do you think Dexter did between 7 o'clock and 9 o'clock in the morning?

- d) What was Dexter doing at 6 o'clock in the morning?

\_\_\_\_\_

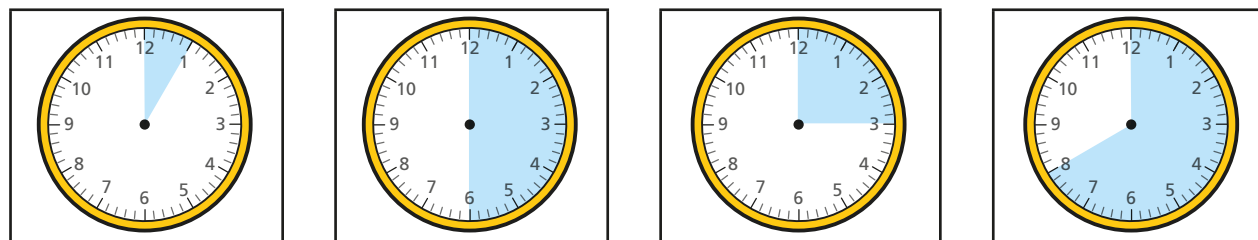
- e) What could Dexter have been doing at 6 o'clock in the evening?

- 6 Work with a partner to draw a bar model showing your day.



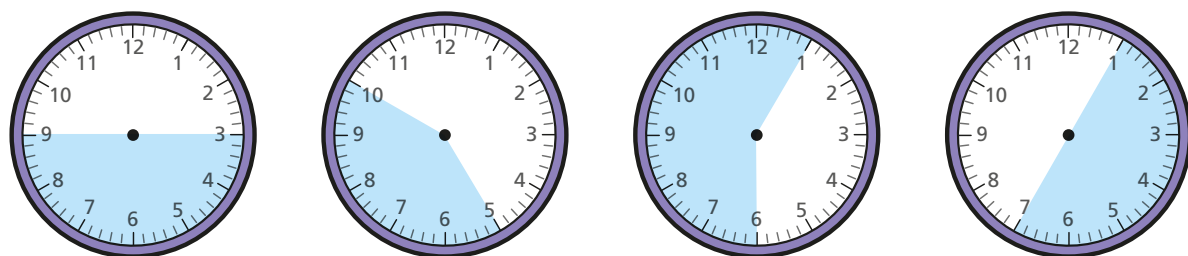
# Find durations of time

1 Match the durations on the clocks to the labels.



15 minutes      40 minutes      5 minutes      half an hour

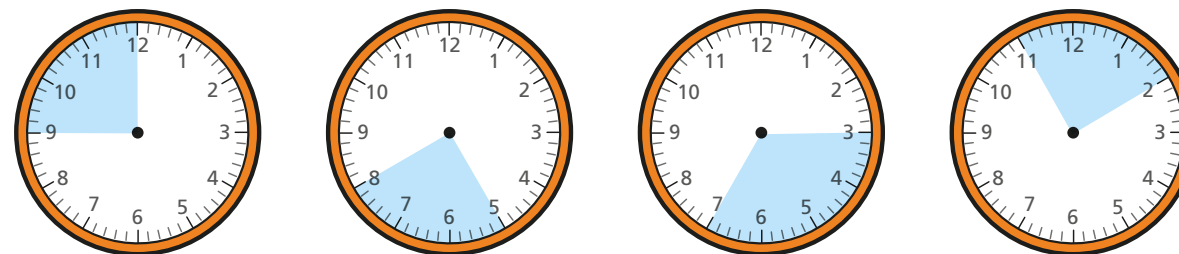
2 Tick all the clocks that show a 30-minute duration.



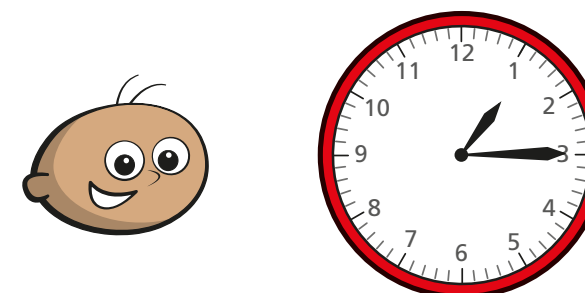
Talk to a partner about what you notice.



3 Tick all the clocks that show a 15-minute duration.

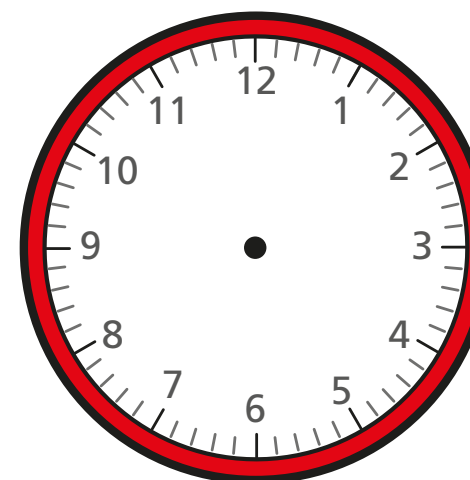


4 Tommy sat down to play a game at quarter past 1

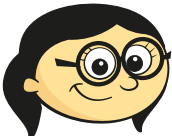

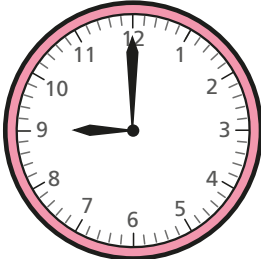
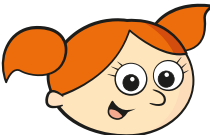
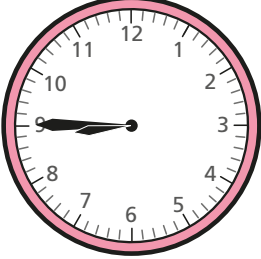
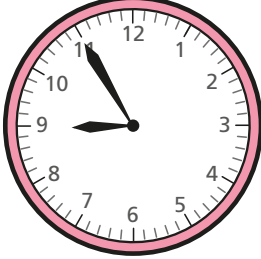

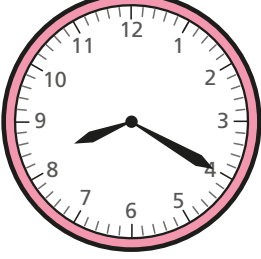
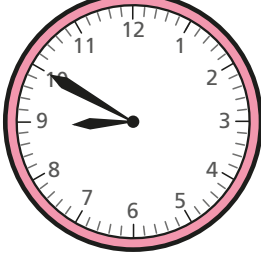


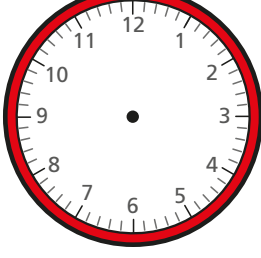

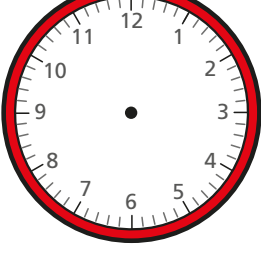
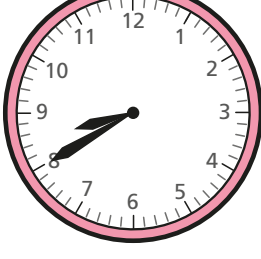


The game took 20 minutes.

Draw the hands on the clock to show what time the game finished.



- 5 The table shows information about some children's journeys to school.

| Name of child   | Left home   | Arrived at school   | Journey time |
|---|---|---|--------------|
| <br>Annie    |    |    | 30 minutes   |
| <br>Alex     |   |   |              |
| <br>Jack   |  |  |              |
| <br>Mo     |  |  | 20 minutes   |
| <br>Dexter |  |  | 15 minutes   |

a) Complete the table.

b) Is each statement true or false?

Circle your answers.

Annie arrived at school first. **true** **false**

Jack left home first. **true** **false**

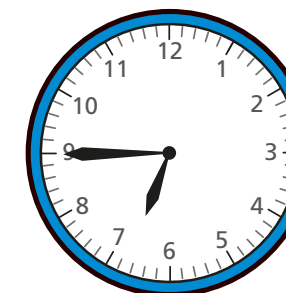
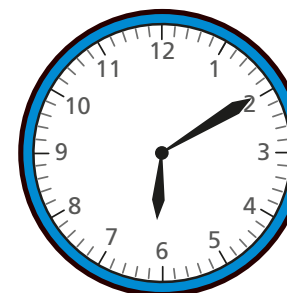
Mo and Dexter left home at the same time. **true** **false**

Annie left home before Jack. **true** **false**

Alex arrived at school after Jack. **true** **false**

Make up your own true or false question about the table to test your partner.

- 6 Whitney watched TV from 10 past 6 until quarter to 7



How long did she spend watching TV?

minutes

# Compare durations of time

1 Write  $<$ ,  $>$  or  $=$  to compare the durations of time.

a) 50 minutes  1 hour

b) quarter of an hour  15 minutes

c) half an hour  25 minutes

2 Write the times in order from shortest to longest.

90 minutes

one hour

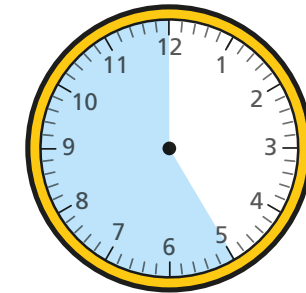
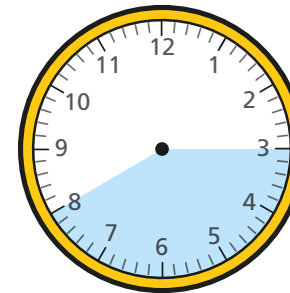
45 minutes

shortest \_\_\_\_\_  
\_\_\_\_\_

longest \_\_\_\_\_

3 Circle all the durations of time that are longer than half an hour.

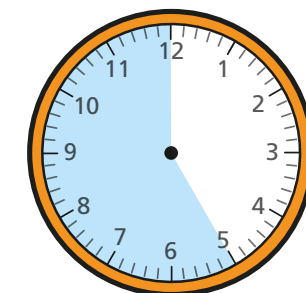
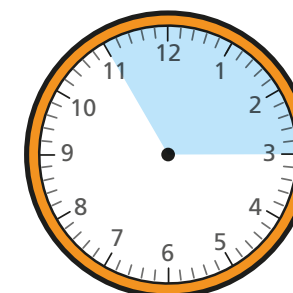
35 minutes



three-quarters of an hour

4 Circle all the durations of time that are shorter than half an hour.

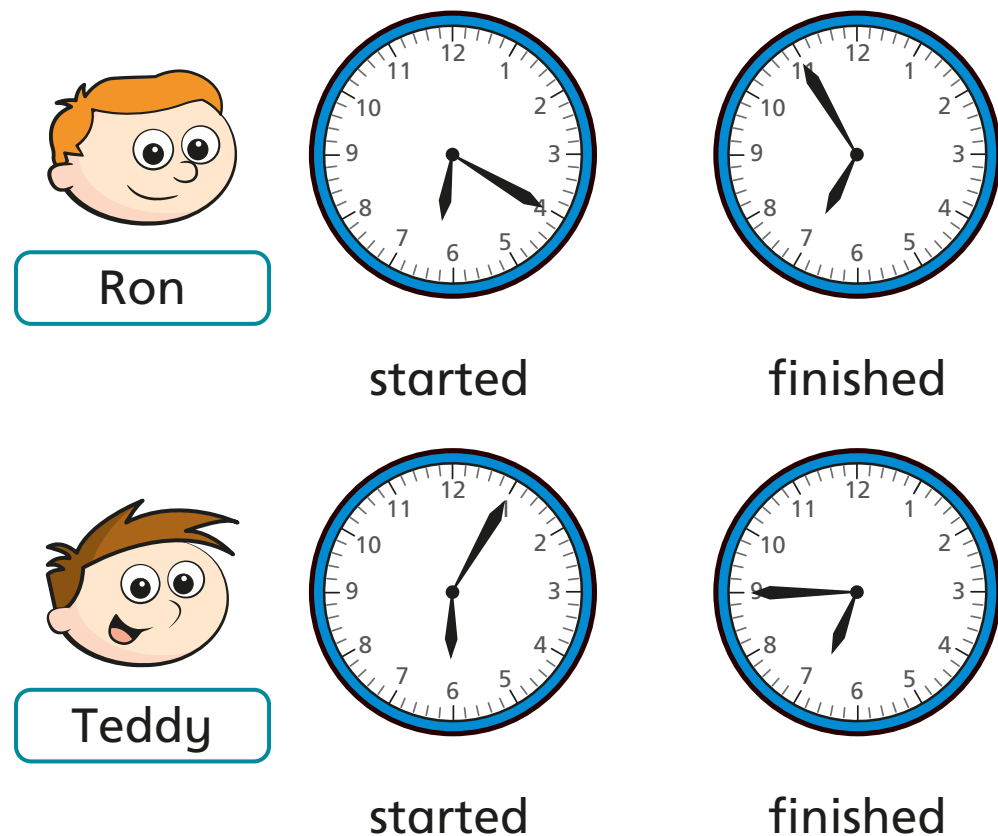
25 minutes



three-quarters of an hour



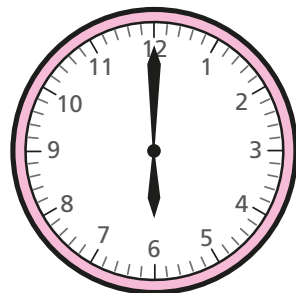
- 5 The clocks show the times that Ron and Teddy started and finished tidying their rooms.



Who tidied their room in the shortest amount of time? \_\_\_\_\_

How did you work this out? \_\_\_\_\_

- 6 Aisha and Kim both started their homework at 6 o'clock.



Aisha finished her homework at 25 past 6  
Kim's homework took her 10 minutes longer.  
What time did Kim finish her homework?

\_\_\_\_\_

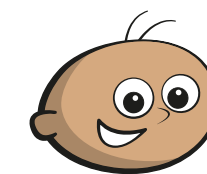
- 7 The children in Class 2 ran around the edge of the school field.

The table shows their start and finish times.

| Name  | Start time     | Finish time  |
|-------|----------------|--------------|
| Tommy | 10 past 2      | half past 2  |
| Amir  | quarter past 2 | half past 2  |
| Dora  | 20 past 2      | quarter to 3 |
| Rosie | 20 past 2      | 20 to 3      |

Use the information in the table to complete the sentences.

- a) \_\_\_\_\_ took the longest time.
- b) \_\_\_\_\_ took the shortest time.
- c) Tommy ran faster than \_\_\_\_\_.
- d)



Tommy

Amir and I  
took the same length  
of time because we  
finished together.

Is Tommy correct? \_\_\_\_\_

How do you know?