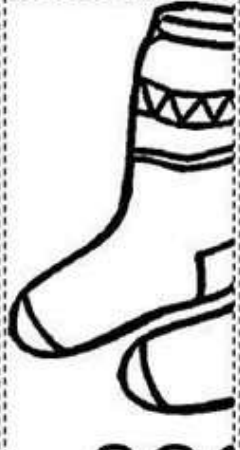
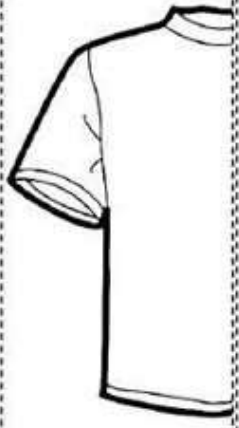


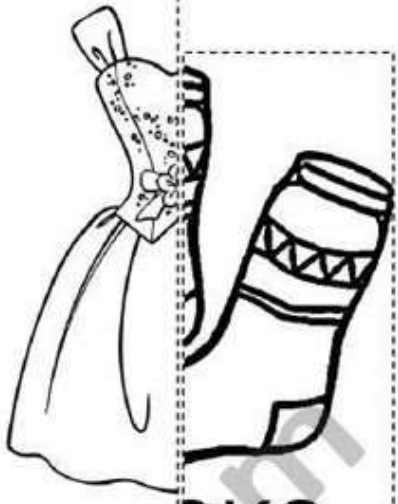
SKI



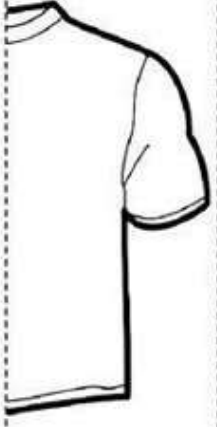
SOCK



T-SHIRT



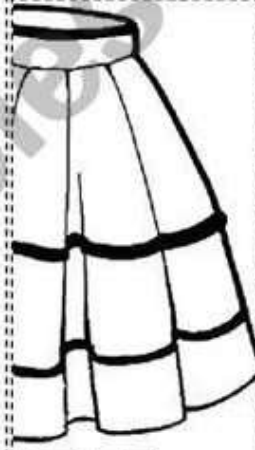
DRESS



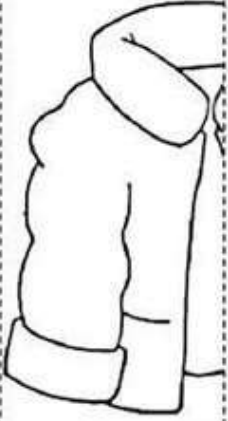
SHIRT



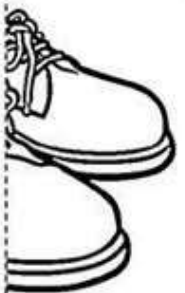
SHIRT



SKIRT



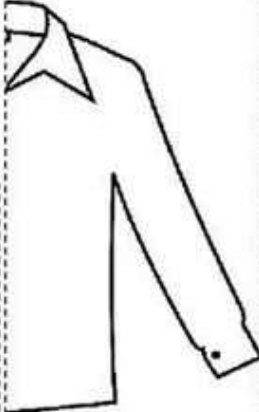
JACKET



SHOES



HAT



SHIRT



HAT



SHOES



JACKET



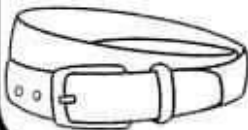
บ้านลือ Kru Pui

Clothes



skirt

.....
.....



belt

.....
.....



hat

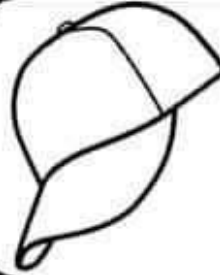
.....
.....



dress

.....
.....

glue



cap

.....
.....



shirt

.....
.....



shorts

.....
.....



sweater

.....
.....



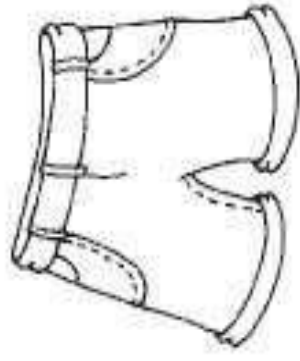
T-shirt

.....
.....

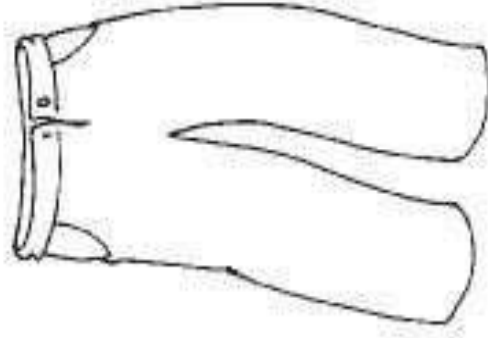


scarf

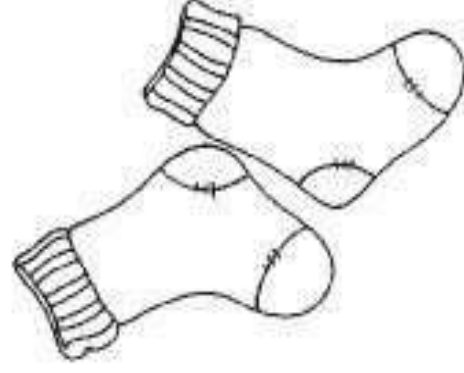
.....
.....



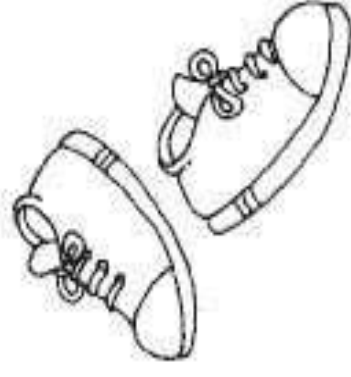
shorts



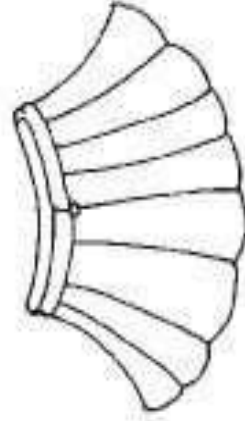
pants



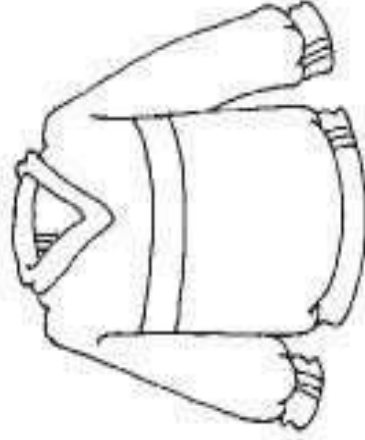
socks



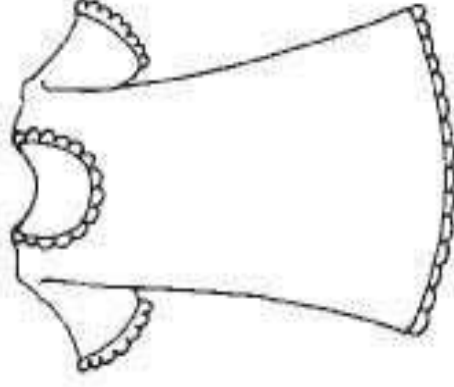
shoes



skirt



sweater



dress

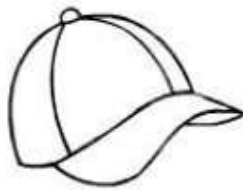


shirt

1 of 1



blouse



cap



coat



dress



jacket



scarf



shirt



shoes



skirt



socks

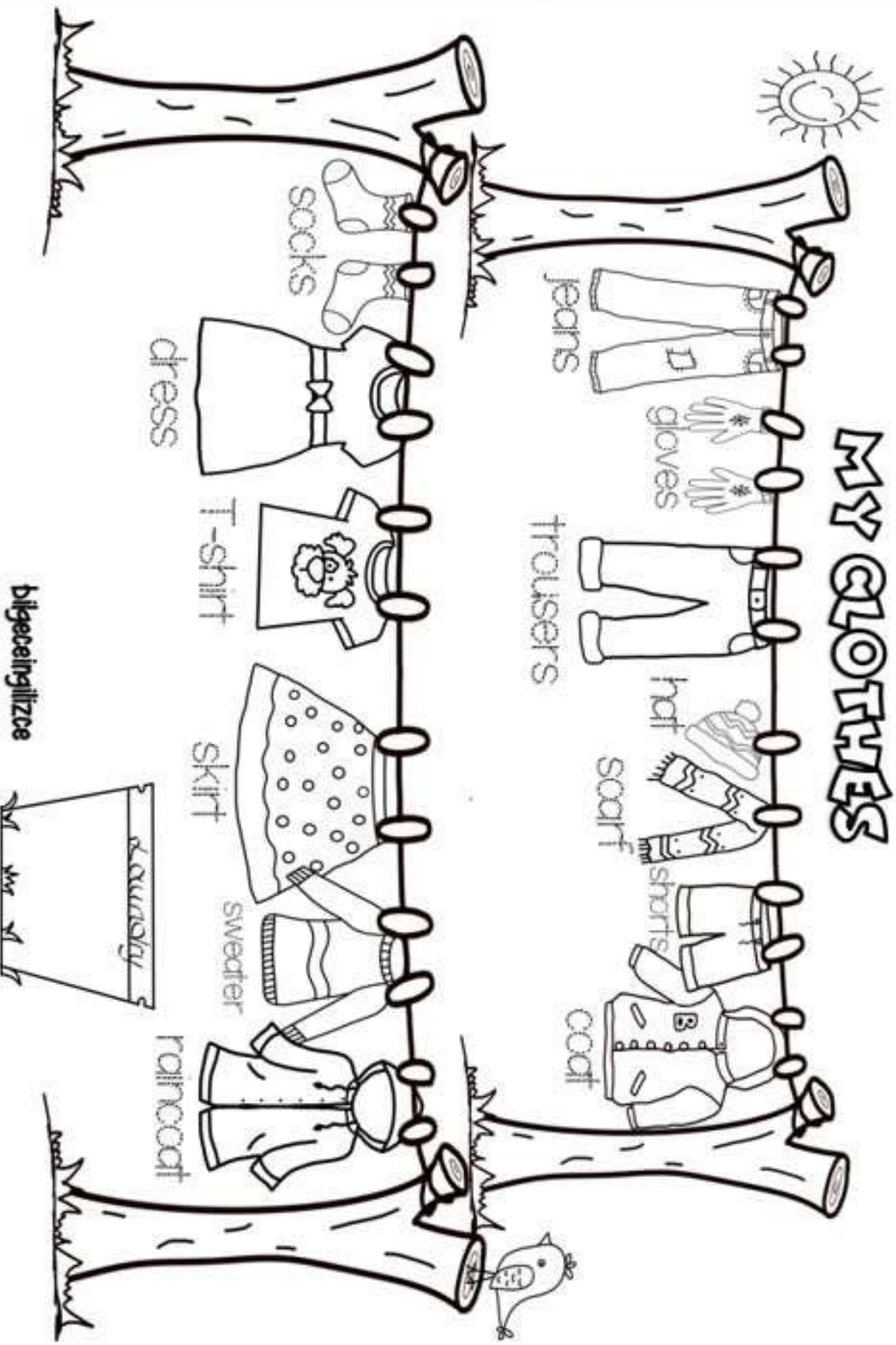


sweater



trousers

MY CLOTHES



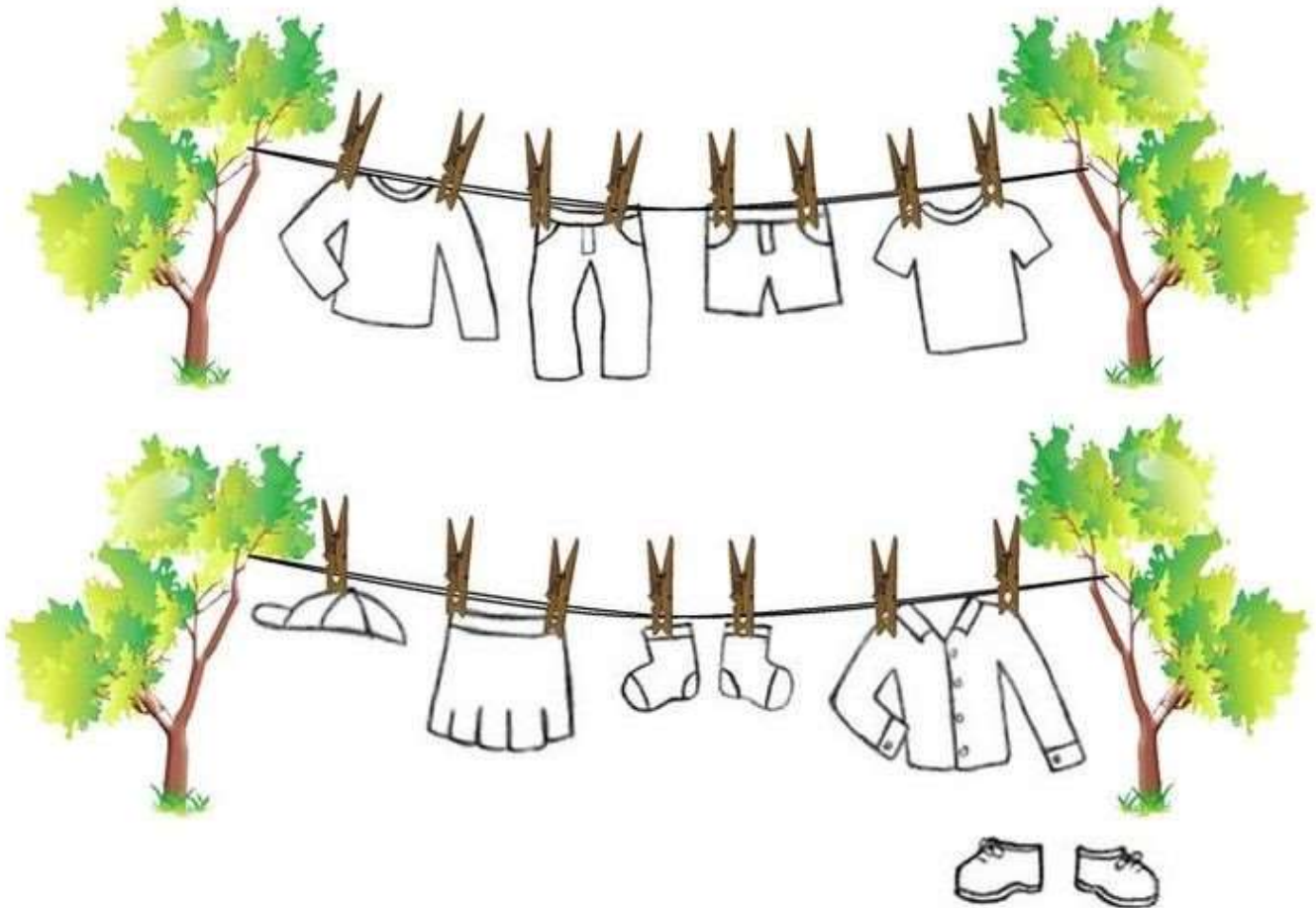
bilgeceingilizce

MY CLOTHES



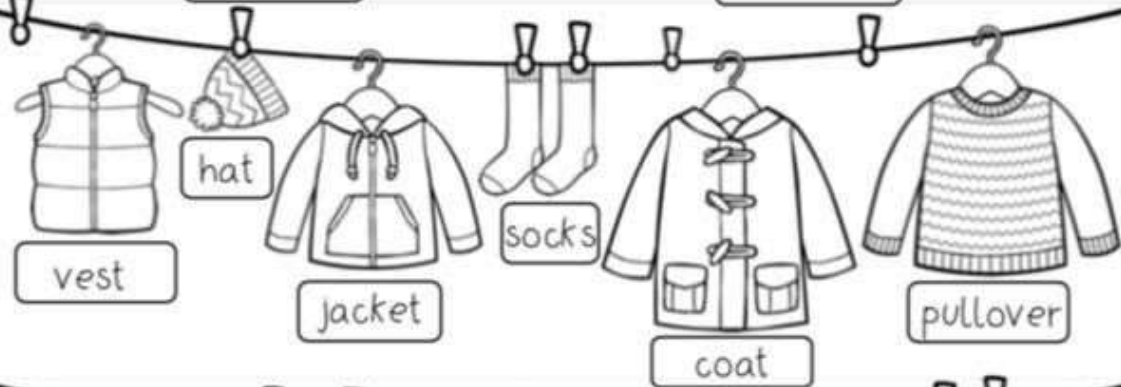
Clothing line

Follow the instructions below.



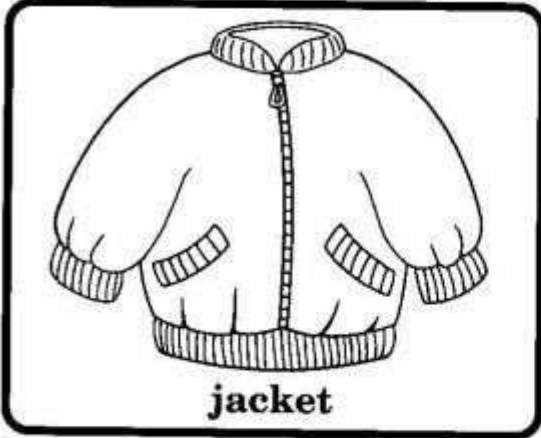
Colour the t-shirt blue.	Colour the socks green.
Colour the skirt pink.	Colour the trousers yellow.
Colour the jumper red.	Colour the shirt purple.
Colour the shoes orange.	Colour the hat black.
Colour the shorts white.	

CLOTHING

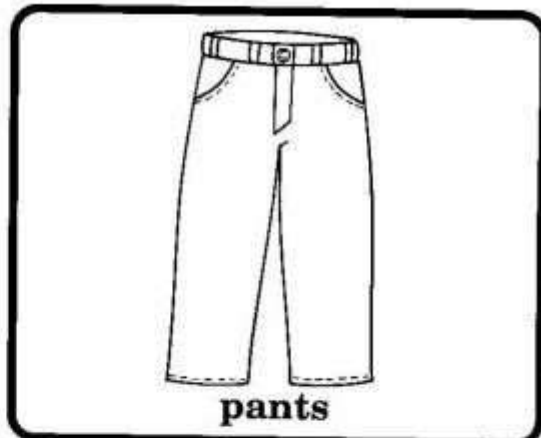


Things I Use

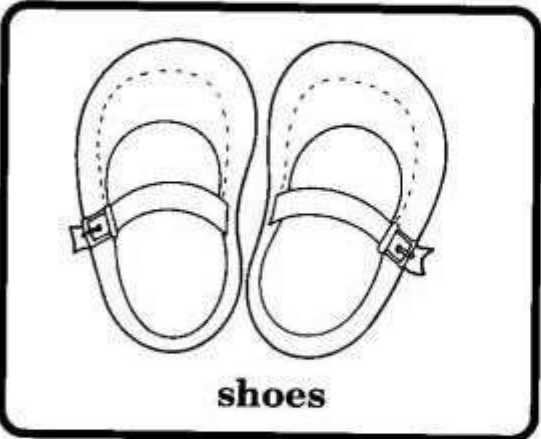
Patterns



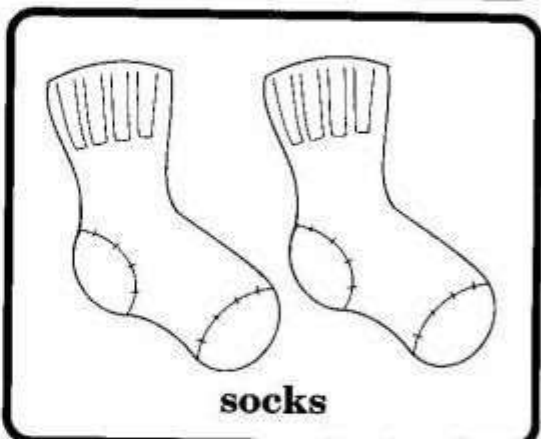
jacket



pants



shoes



socks



shirt



shorts