



ELECTRICAL SAFETY



Inspect work area for electrical hazards daily, including:

EXTENSION CORDS

- **FRAYED OR WORN**



Always check extension cords before use or the result could be deadly.



#changethebehaviour

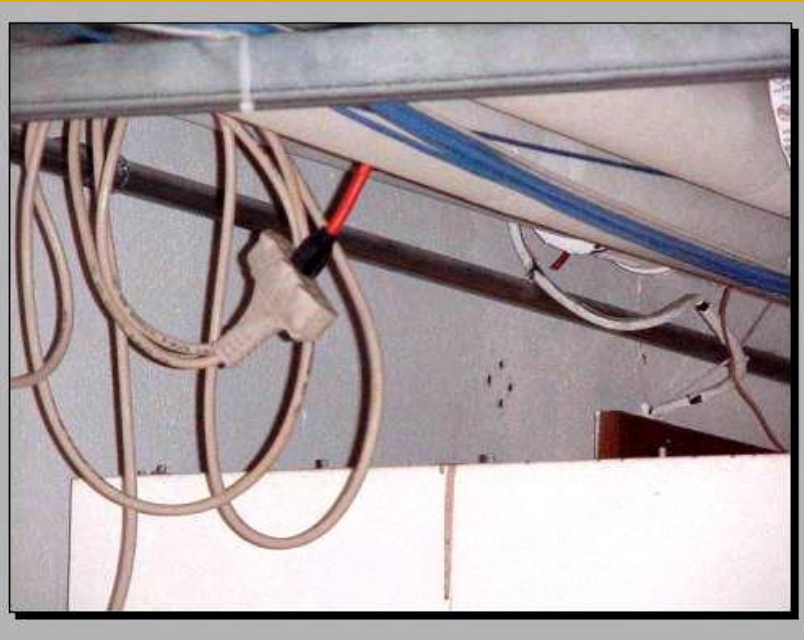




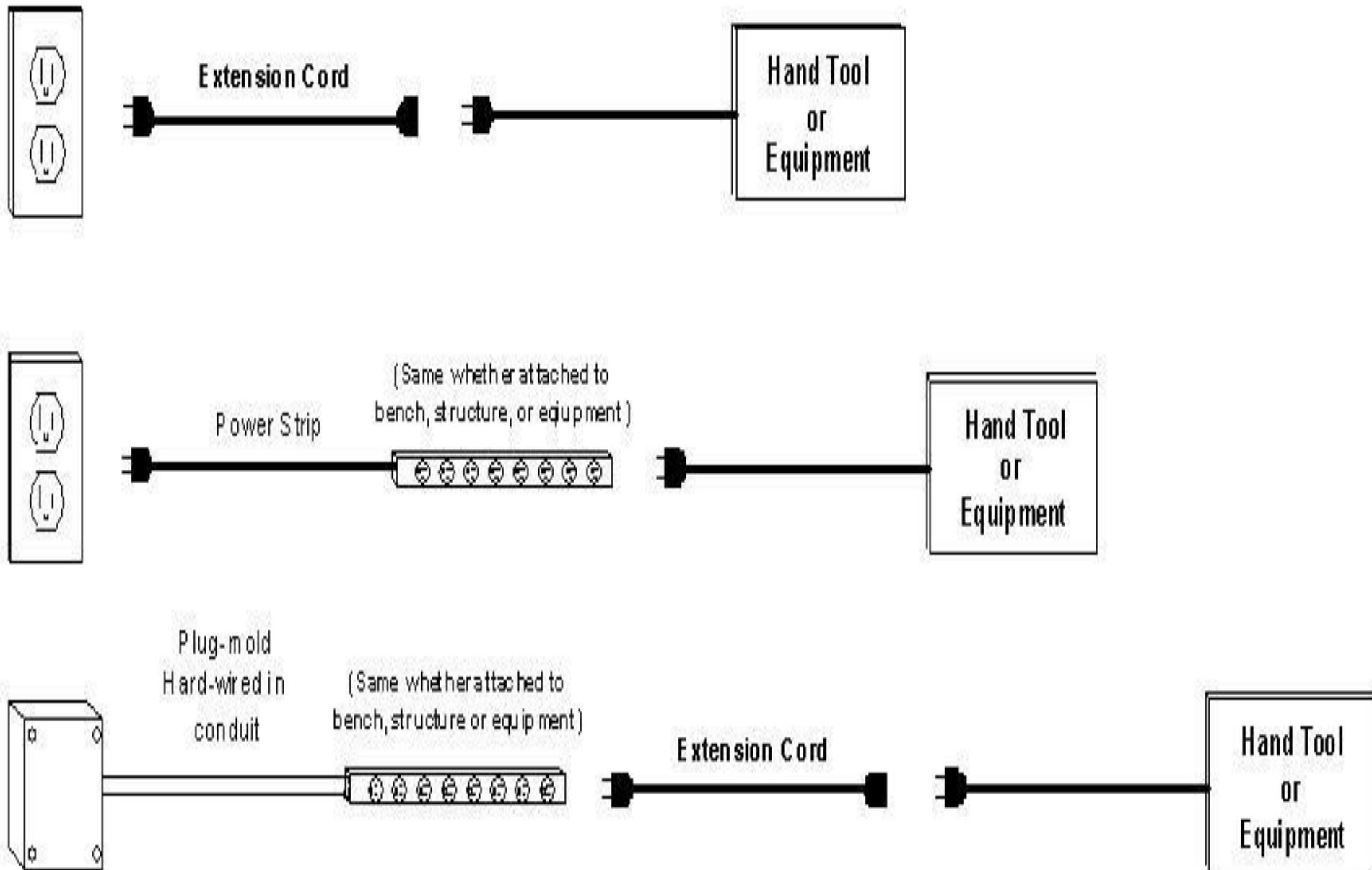
- **GROUND PIN INPLACE (MISSING)**



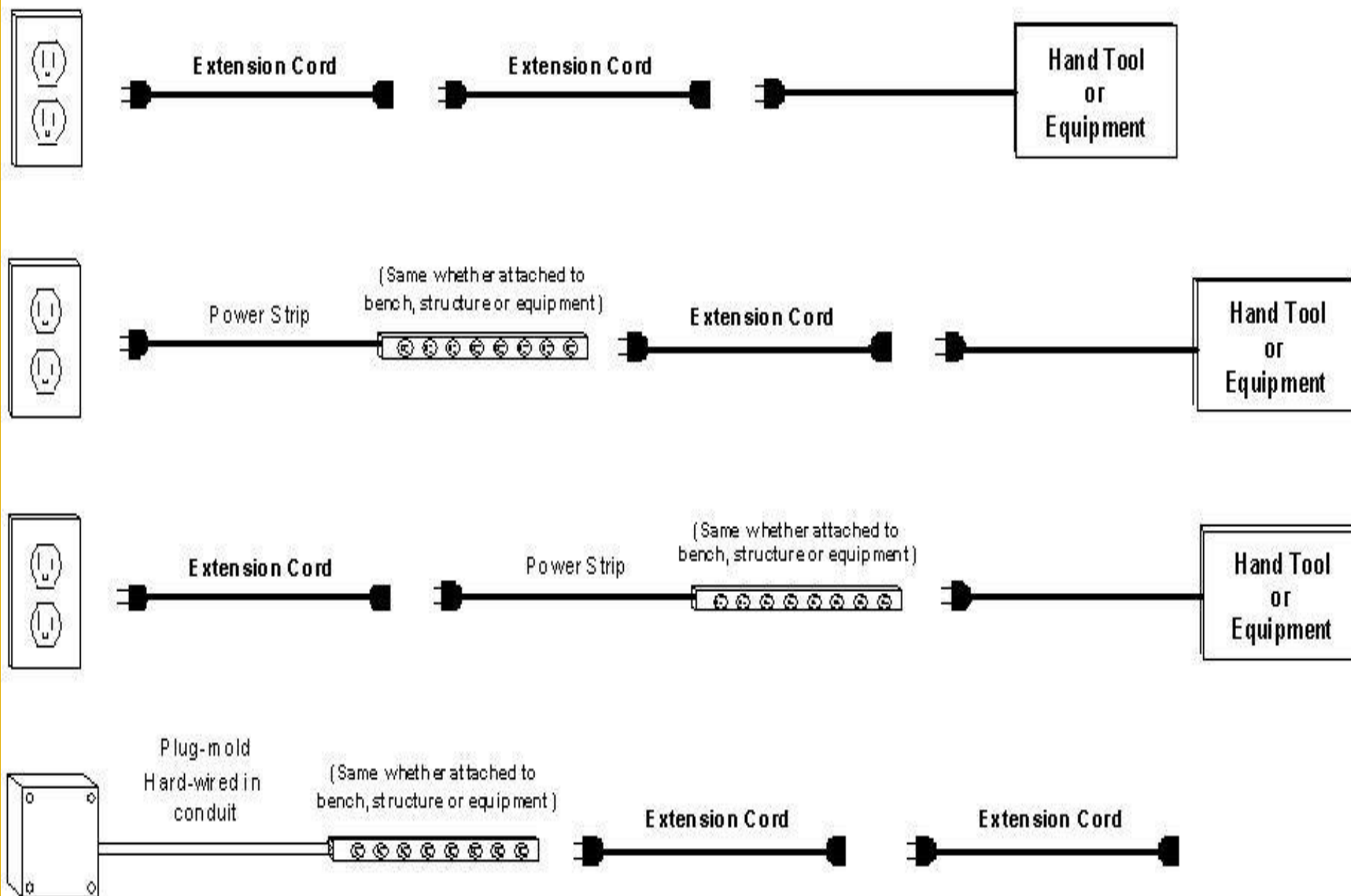
- **CONTINUOUS LENGTHS; NO DAISY-CHAINING**



Acceptable combinations of extension cords and power strips.



Unacceptable (Daisy-chain) combinations of extension cords and power strips.





- **PROTECT FROM DAMAGE INCLUDING THAT CAUSED BY FOOT OR VEHICLE TRAFFIC**

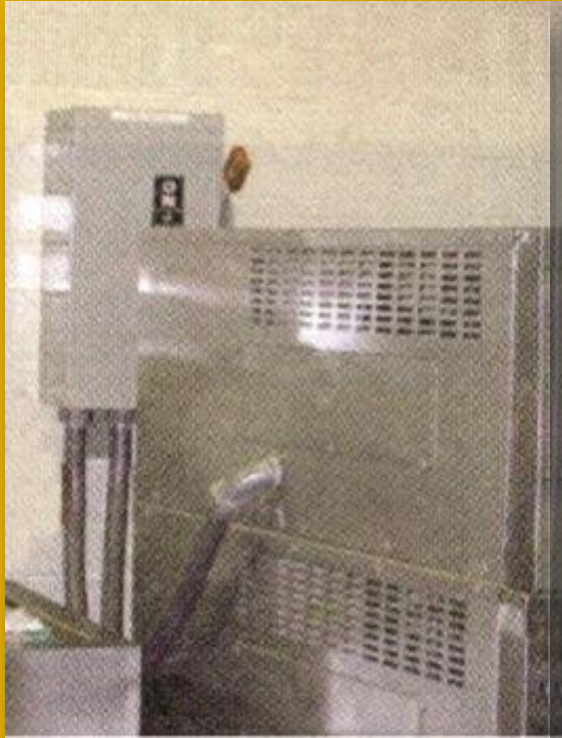




ELECTRICAL PANELS

“NO OBSTRUCTION WITHIN 36 INCHES”.

**IS THERE SUFFICIENT CLEARANCE AROUND
ELECTRICAL EQUIPMENT?**





GFCI (GROUND FAULT CIRCUIT INTERRUPTER)

- **WITHIN SIX FEET OF SINKS AND EXTERIOR DOORS; ON METAL-SURFACED WORKBENCHES; ON OUTDOOR RECEPTACLES**





- OUTDOOR WEATHERPROOF COVER (MISSING)





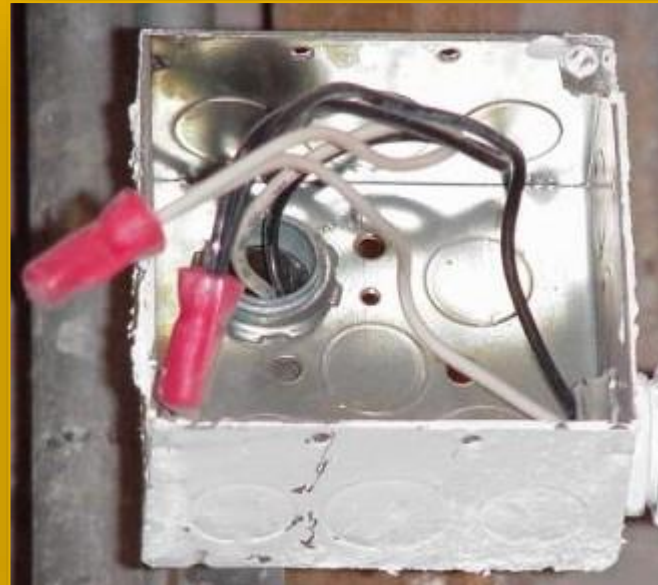
- TEST MONTHLY IF PRACTICAL





PROTECTIVE COVERS

- GUARDING OF ENERGIZED PARTS TO PREVENT ACCIDENTAL CONTACT; OVER POWER PANELS, JUNCTION BOXES, AND UNUSED HOLES.





ELECTRICAL PANEL DIRECTORIES

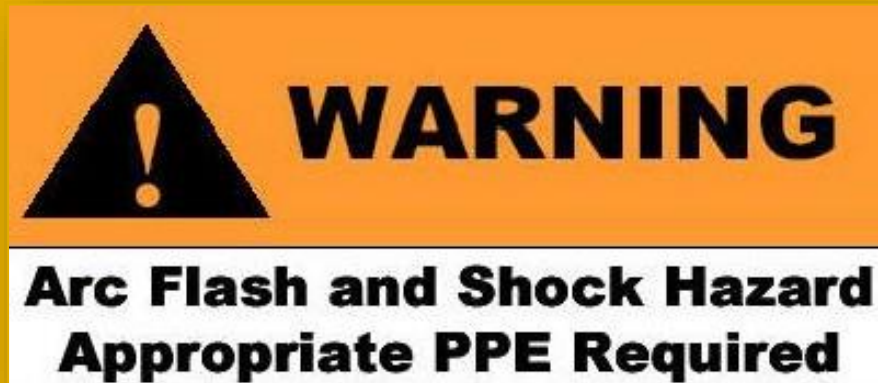
- IN PLACE AND ACCURATE AND POWER CABINETS AND BREAKERS PROPERLY LABELED



ENERGIZED WORK



- ALERT THE OCCUPANTS OF THE PLANNED WORK
- WARNING SIGNS AND BARRICADES
- PPE (PERSONAL PROTECTIVE EQUIPMENT)





LOCKOUT & TAGOUT

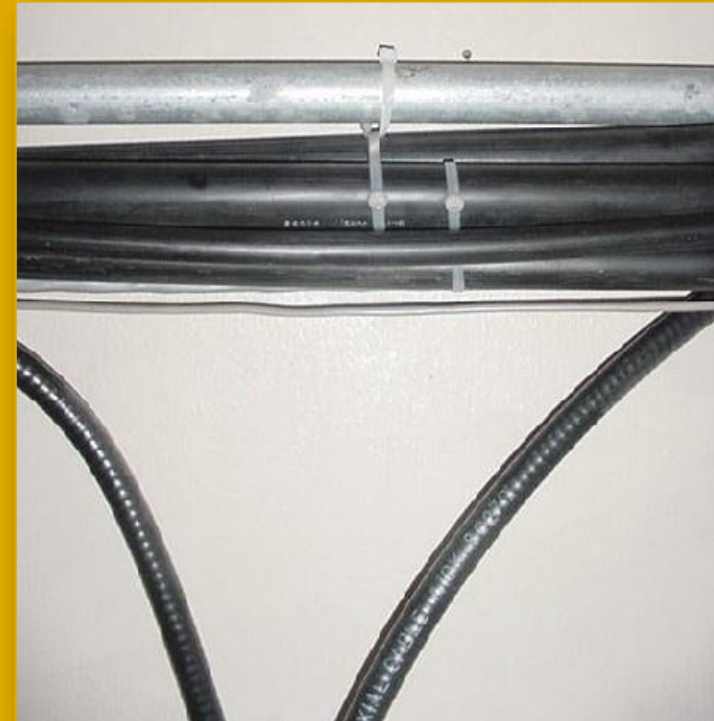
- DEVICE ATTACHED TO PREVENT OPERATION





OTHER HAZARDS/VIOLATIONS

- RACEWAY CANNOT BE USED TO SUPPORT LOW VOLTAGE OR LIMITED ENERGY CABLES
- GROUNDING & BONDING OF CABLE TRAYS





- **OVERLOADED POWER STRIP**
- **METAL LADDER IN AREA WHERE EXPOSED ENERGIZED PARTS ARE PRESENT**





MAINTENANCE & REPAIRS

- **UNQUALIFIED PERSONS SHALL NOT TAMPER WITH BUILDING ELECTRICAL WIRING**





ELECTRICAL SAFETY IS EVERYONE'S RESPONSIBILITY !

- REDUCING & ELIMINATING EXPOSURE TO ELECTRICAL HAZARDS REQUIRES YOUR CONSTANT ATTENTION

