

Get ready!

- Before you read the passage, talk about these questions.
- What are some common network problems?
- What are some common solutions to network problems?

HOME

ABOUT US

OUR SERVICES

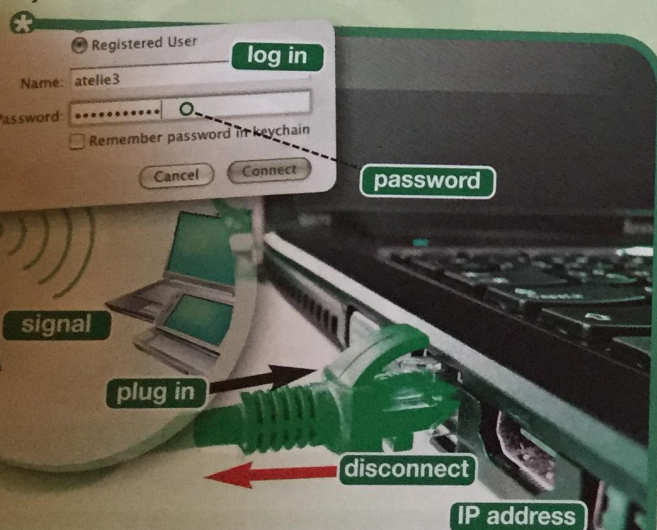
CONTACT

Troubleshooting network connection problems for wireless networks

If it appears that your router is not working, try these steps to resolve first:

- * Make sure the wireless router is **plugged in** to both the power source and the phone jack.
- * Check that the wireless adapter on your computer or laptop is enabled.
- * If your computer still does not **detect** a signal, **cycle** the router by **disconnecting** it from the power source. Wait 45-60 seconds and plug it in again. The power light should come on first. This will be followed by the light indicating a signal is being received.
- * You could also try restarting your computer. Restarting your computer helps **clear** the web browser's data **cache**. Clearing the cache may improve the speed of your computer.
- * **Log in** by entering your **password** when prompted. Wait for the computer to boot up completely.
- * Check under network connections to see if an **IP address** is being detected. The IP address may need to be **renewed** if it is not **TCP/IP** compatible. If no address is detected, renew the IP address.

If these suggestions did not solve the problem, contact your ISP.



| | |
|-------------|-------------------|
| Name | PC-007 |
| IP Address | 192.168.001.007 |
| MAC Address | 00-A0-C9-69-22-EA |

Reading

- Read the website. Then, choose the correct answers.
 - What is the main idea of the website?
 - to present different networking options
 - to suggest ways to protect networks
 - to show how to set up a new network
 - to list tips on resolving network problems
 - Which of the following is NOT suggested?
 - replacing the modem
 - restarting the computer
 - renewing the IP address
 - unplugging the router
 - According to the website, why is restarting the computer useful?
 - It renews the IP address.
 - It enables the wireless adapter.
 - It clears the web browser's cache.
 - It cycles the router.

Vocabulary

- Match the words or phrases (1-8) with the definitions (A-H).

- | | |
|-----------------|-------------|
| 1 __ password | 5 __ clear |
| 2 __ IP address | 6 __ detect |
| 3 __ cache | 7 __ log in |
| 4 __ signal | 8 __ cycle |

- a storage place for information and data
- to remove all stored data from a file or device
- a code that must be entered to verify identity or gain access to a resource
- the process by which one can access a secure system that is password protected
- a wave or field used to communicate information from a source to a recipient device
- a numerical label assigned to every device in a network that uses the Internet
- to pick up or receive a signal
- to shut down and restart a device